



**ORC**  
Offshore Racing Congress  
World leader in rating technology

**2019  
ORC Club  
Certificate**

**Rating Office**

**Offshore  
Racing  
Congress**



**Certificate**

Number **135/19**  
Issued On **23/07/2019**  
ORC Ref **CRO00091195**  
VPP Ver. **2019 1.01**  
Valid until **31/12/2019**

**Crew Weight**

Default 897kg  
Maximum **897kg**  
Minimum\* **673kg**  
*\*when applied by the NoR and SI*  
Non Manual Pwr

**Special Scoring**

	ToD	ToT
Non Spin GPH	<b>544.0</b>	<b>1.1029</b>
Non Spin OSN	<b>530.6</b>	<b>1.1309</b>

**Sails Limitations**

Headsails **7** Spinnakers **5**

**Asymmetric on centerline**

**Spinnaker configuration**  
Symmetric: **No**  
Asymmetric: **Yes 136.48**  
Flying H/S: **No**  
Spin. Pole: **No**

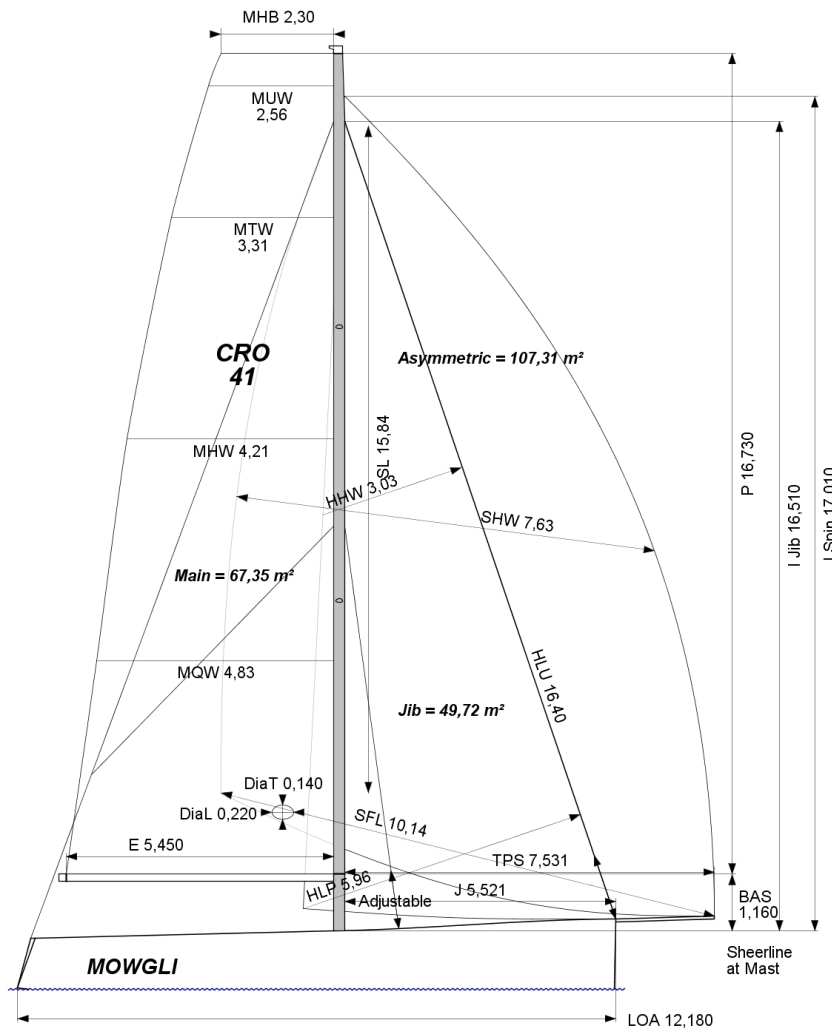
**Class Division Length**

**CDL = 12.374**

**Stability (Estimated)**

Limit Positive Stab.: **124.3°**  
Stability Index: **121.2**

**Owner**



BOAT	GPH	HULL
Name <b>Mowgli</b> Sail Nr <b>CRO 41</b>	<b>511.4</b>	Data File <b>CRO41</b> LOA <b>12.180m</b> Offset File <b>AKILARIA40_DV.</b> MB <b>4.496m</b> Displacement <b>5,050kg</b> Draft <b>3.007m</b>
<b>CLASS</b> Class <b>Class 40</b> Designer <b>Lombard</b> Builder <b>MC-TEC</b> Series <b>01/2006</b> Age Date <b>01/2007</b> Age Allowance <b>0.422%</b>		IMS Division <b>Performance</b> Dynamic All. <b>0.000%</b> Fwd Accom. <b>No</b> Construction <b>Cored</b> Fiber Rigging <b>No</b> Aramid Core <b>No</b> Crew Arm Ex Carbon Rudder <b>No</b> Light Stanchions <b>No</b>
<b>COMMENTS</b>		IMSL <b>12.103m</b> VCGD <b>-0.500m</b> Sink <b>27.35kg/mm</b> RL <b>12.644m</b> VCGM <b>-0.480m</b> WS <b>33.74m²</b> LSM0 <b>12.043m</b> Displacement/Length ratio <b>2.8913</b>
<b>PROPELLER</b> Installation <b>Strut</b> PRD <b>0.420</b> Type <b>Folding 2 blades</b> PIPA <b>0.0032</b>		Water Ballast <b>0</b> Trim Tab <b>No</b> BLR Index <b>0.0000</b>
		<b>CENTERBOARD</b>  <b>N/A</b>
<b>SCORING OPTIONS</b>		
	<b>COASTAL / LONG DISTANCE</b>	<b>WINDWARD / LEEWARD</b>
Time on Distance	<b>496.4</b>	<b>563.4</b>
Time on Time	<b>1.2088</b>	<b>1.1980</b>
Triple Number	Low Medium High	Low Medium High
Time on Distance	<b>585.6 454.9 393.2</b>	<b>756.6 567.7 491.0</b>
Time on Time	<b>1.1526 1.4837 1.7168</b>	<b>0.8922 1.1890 1.3748</b>